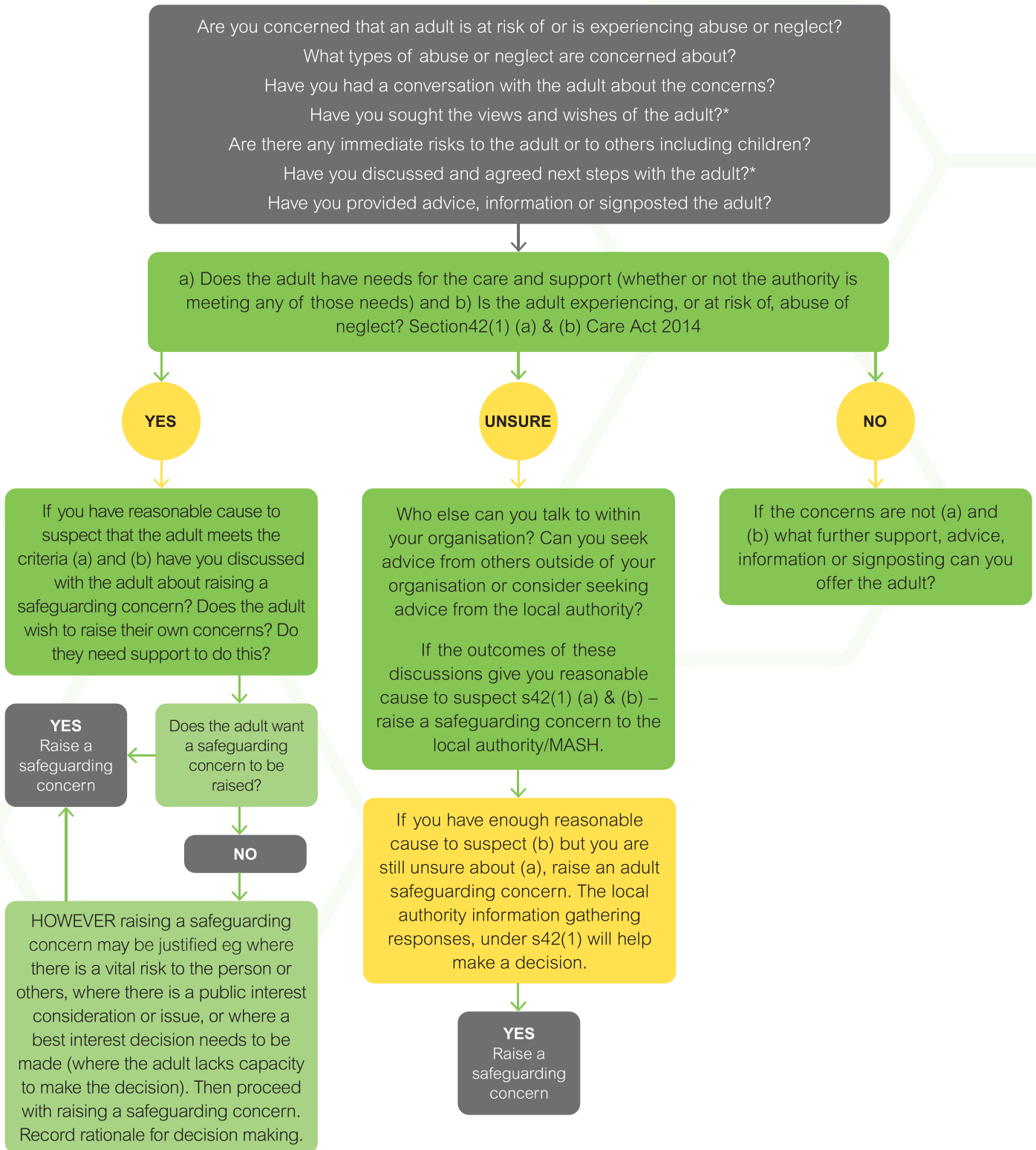


## Deciding if you need to raise a safeguarding concern to the local authority/Multi-Agency Safeguarding Hub (MASH)



\*There may be circumstances where the safety of the adult or yourself prevent this from happening. If you still have concerns about abuse or neglect and it is not possible or within the scope of your role to have a conversation with the adult, then if in doubt continue with the process and raise a safeguarding concern.