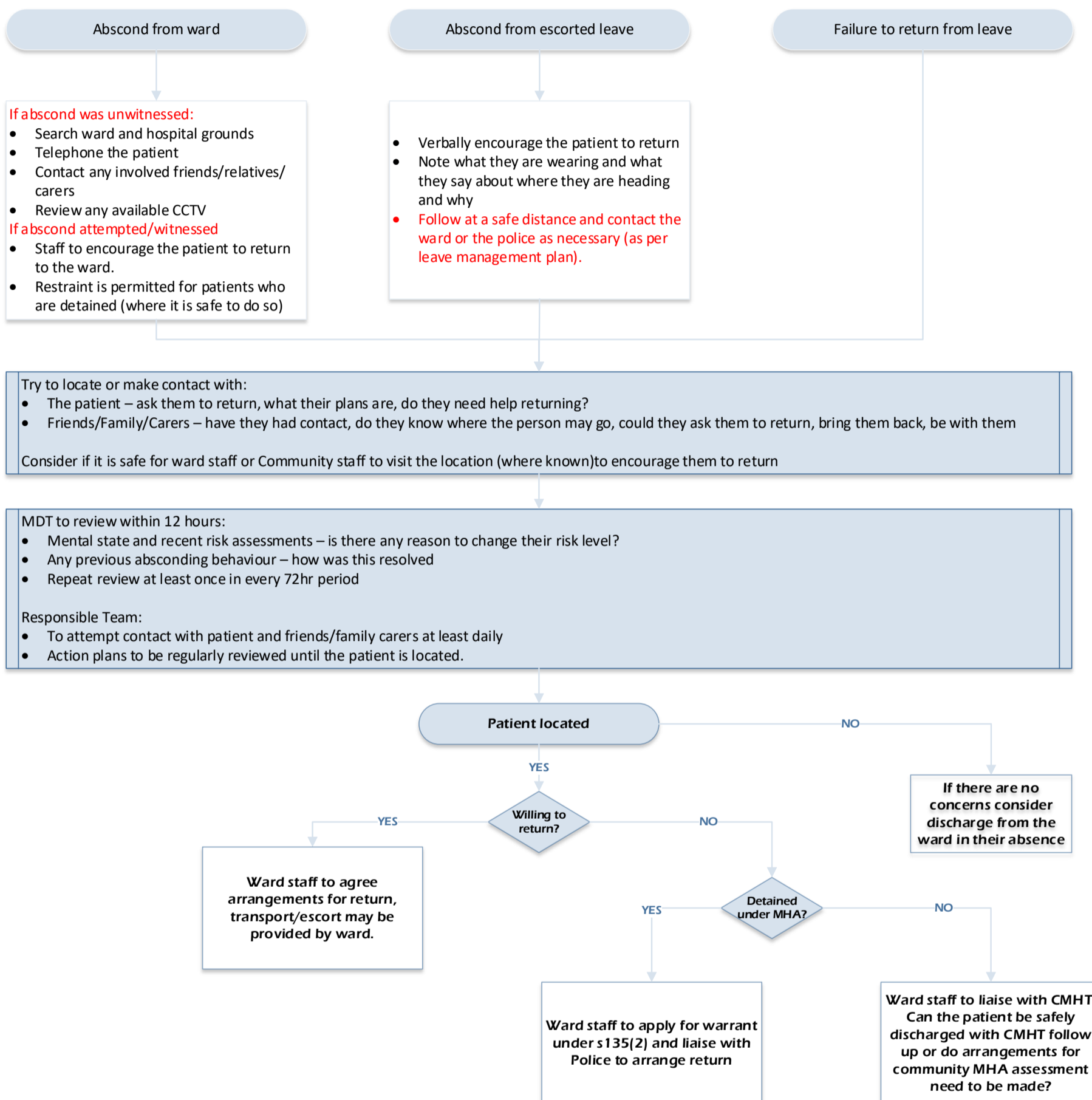


Response to patients who are AWOL or who have walked out of a MH inpatient unit

The Trust is the organisation with primary responsibility for locating and returning patients who are AWOL or have walked out of an inpatient unit.

If the patient is a restricted part III patient contact the police on 999 as soon as you are aware that they are AWOL



Where a decision is made to contact the Police to request assistance with locating a patient the following information must be provided:

- What is the specific concern in this instance?
- What has been done so far to trace this individual?
- Is this significantly out of character?
- Has this happened before - if so what was the outcome?
- Are there any specific medical needs?
- Are they likely to be subjected to crime?
- Are they likely to be the victim of abuse?
- Are they currently at risk of Sexual Exploitation?
- Are they likely to attempt suicide?
- Do they pose a danger to other people?
- Information about any person who may have contact with the patient.